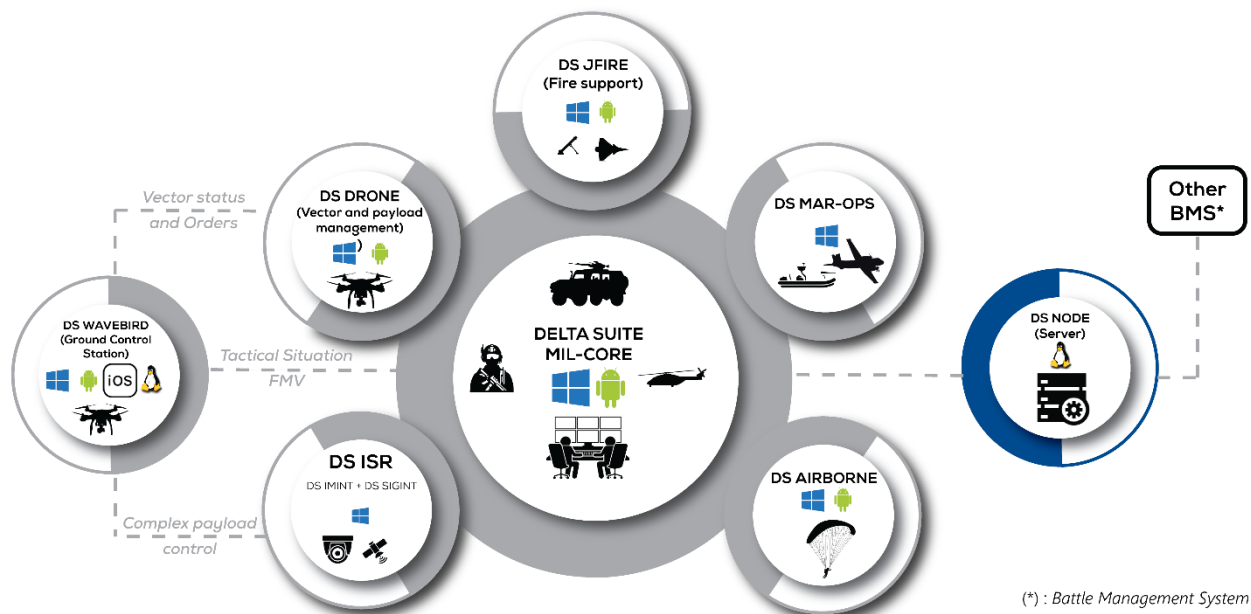
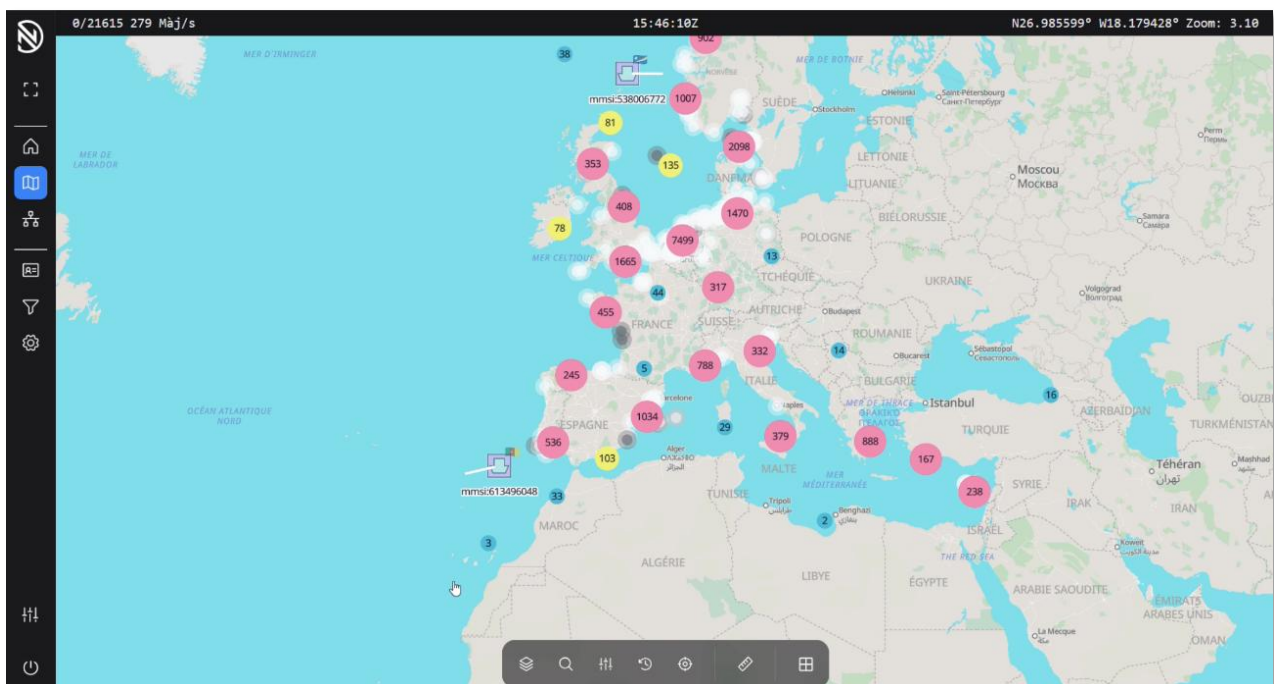


# **IMPACT** **PRODUCT SHEET – DS-Node**



## Introduction

**DS-Node** is a tool acting as a communication server. It runs on the Linux operating system and can be installed on a wide variety of terminals<sup>1</sup> (servers, hubs, clouds, mini-computers, etc.). The **DS NODE** server, combined with the DELTA SUITE ecosystem, used in operation since 2015 by the French Special Operations Command, promotes **interoperability** with third-party systems through adherence to military and civilian standards or protocols<sup>1</sup>.



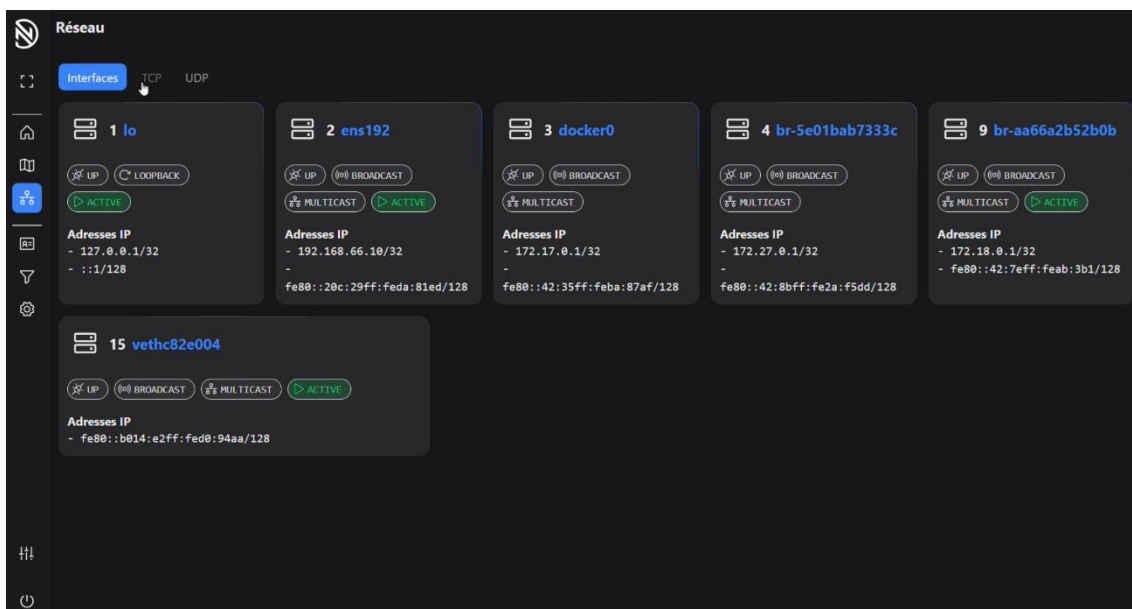
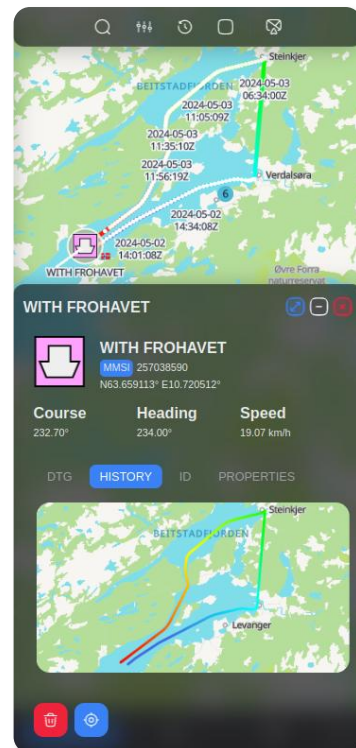
<sup>1</sup> Contact IMPACT for a comprehensive list of compatible protocols, equipment, or systems

# **IMPACT** **PRODUCT SHEET – DS-Node**

## Features of DS-Node

The features provided by **DS-NODE** are the following:

- 🌐 Server administration through a Web interface (configuration, metrics visualization, etc.);
- 🌐 Map visualization, accessible from a lightweight client (web browser), of the entire track set managed by the server;
- 🌐 Merging tactical tracks received from various sources to send them to other systems<sup>1</sup>, including the **DELTA SUITE** ecosystem;
- 🌐 VPN interface management (Virtual private network);
- 🌐 Configuration of different clients and BMS<sup>2</sup> on local network or VPN in order to authenticate them on the server;
- 🌐 Possibility of making different BMS<sup>1</sup> interoperable via multi-protocol management<sup>1</sup>;
- 🌐 Filtering of tracks (transmission and/or reception);
- 🌐 OGC compliant mapping server;
- 🌐 XMPP messaging server.



## Contact

For more information, you can visit our website <https://sas-impact.fr/> or send us an email at [contact@sas-impact.fr](mailto:contact@sas-impact.fr).



<sup>2</sup> Battle Management System