

Delta Suite concept for police and civil protection operations

Presentation

DELTA SUITE enables a situation to be presented on a cartographic background, in real time, to each member of a network defined for an operation. That can be done using PCs, tablets or smartphones, to share elements of interest.

DELTA SUITE CIV-CORE includes the basic modules required **by users in the security and safety forces (police, firemen, rescue teams, customs, private security, etc.)**. Its "Windows" version is designed to equip operators working on this operating system, whether on foot, in vehicles or working from a **command/crisis management center**.

Complementary modules can be added to meet more specific business needs.



In its military version, DELTA SUITE has been used in operations since 2015 by the French Special Operations Command. It facilitates interoperability with third-party systems through compliance with military and civilian standards and protocols (VMF, CoT, NMEA2000, FFI/MTF, MAVLINK, STANAG 4609, REST API, POP, SMTP, etc.).

DELTA SUITE CIV-CORE for Windows features

Based on a strong foundation of native functionalities (dashboard, search tools, measurement tools, etc.), some specific modules can be integrated to provide advanced capabilities.

Cartography module

Integrated cartographic tools enable interaction with a wide range of geographic data formats (import of vector or raster files, connection to map servers), as well as spatial analysis (calculation of slope profiles, intervisibility, danger zones (geofencing), etc.).

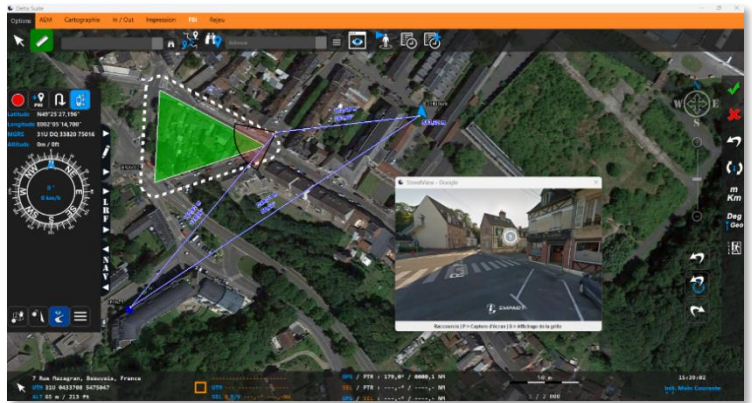


Communications module

DELTA SUITE CIV-CORE enables automatic interconnection of members of the same communication network, which may be located on a tactical bubble (GSM, satellite radios or other radio communication systems). It can also be used as a gateway between different networks to transfer information from a local communications bubble to a remote command center.

Location and navigation module

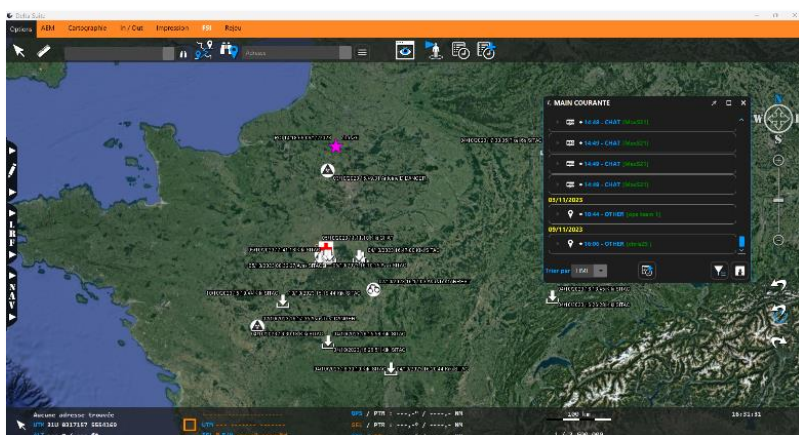
This module allows you to position yourself on the map using internal or external receivers, including inertial units¹, and provides access to basic or advanced navigation tools. In addition, provided it is connected to a remote server, this module can display or search postal addresses, and can calculate itineraries based on transport mode, type of route (recommended/shortest/fastest) and areas to avoid. Consultation of images from Google Street View is also included, provided if the area is covered and Internet access is available.



"TACTical SITUation (TACSIT)" monitoring module

Provided it is connected via one of the many compatible means of communication, this module provides advanced tools for monitoring and exchanging the local tactical situation. It is based on real-time fusion of feedback from friendly positions (Blue Force Tracking), vector information entered by operators and data received from sensors in the DELTA SUITE ecosystem. In particular, it is possible to exchange annotated or gridded photos or videos.

The connection to the remote server mentioned above enables the tactical situation to be completed, with points of interest (institutions, shops, cultural sites, fire hydrants, etc.).



Event tracking module

This module automatically records significant events² reported by the Delta Suite devices (Windows or Android) that make up the network. It requires connection to the server hosting the service.

¹ Contact Impact for a list of managed systems.

² Contact IMPACT for a complete list of displayable events.



"CHAT" messaging module

This is an instant messaging tool that can operate either point-to-point (DELTA SUITE internal exchange protocols) or in client-server mode (Matrix protocol, TCHAP compatible). This module enables messages and attachments to be exchanged within the DELTA SUITE network, as well as with compatible systems users.

"Full Motion Video (FMV)" module

This module can simultaneously process multiple real-time or delayed video streams³ from a variety of sensors (embedded in UAVs, aircraft, etc.).

It can also be used to connect to a server for retrieving video streams from surveillance cameras, to create video displays and make them easier to use.





Processing of the video stream and associated metadata enables video-related information to be displayed in the DELTA SUITE map background (target, sensor footprint, carrier position, line of sight, areas already observed, etc.).

It can also be used to display vector-based information directly in the video player (TACSIT or gridded map, and the ability to draw points, lines or polygons in the video player).

Optional modules

DS IMINT

This business module, compatible with the Windows version only, is dedicated to piloting optronic systems on board aircraft, and offers a set of advanced tools for optimizing their operation:

-  Optronic systems⁴ control;
-  Encoder control;
-  Extraction of target point address and display in a title block;
-  "Moving map" tool (mobile map).

Contact

For more information, please visit our website <https://sas-impact.fr/> or write to us at contact@sas-impact.fr.

³ Contact IMPACT for a list of supported formats.

⁴ Contact Impact for a list of managed systems.