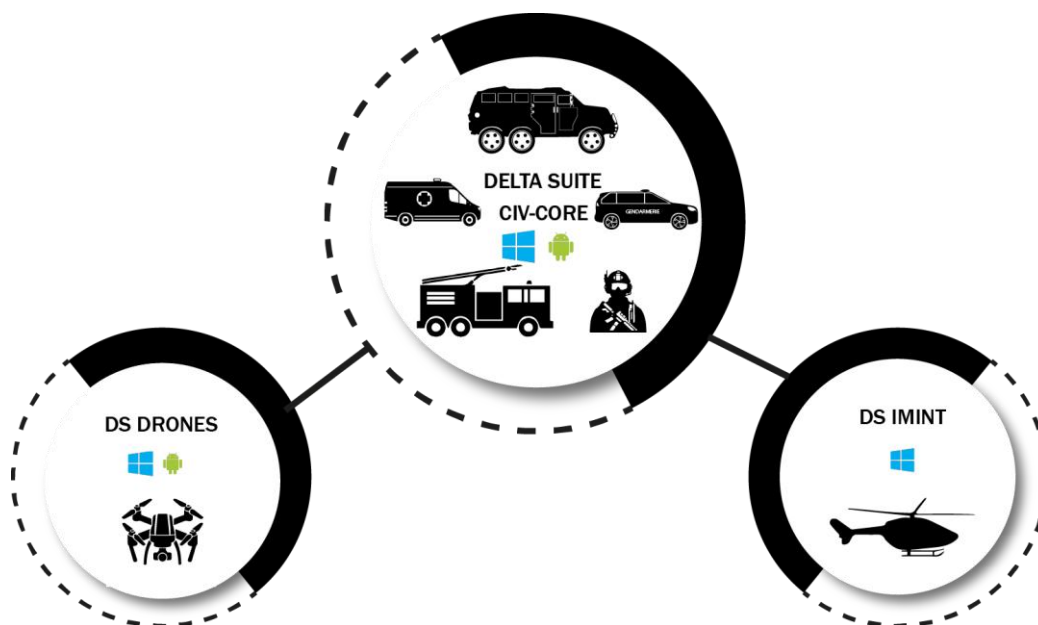




# PRODUCT DATA SHEET – DELTA SUITE CIV-CORE for Windows



*Delta Suite concept for police and civil protection operations*

## Presentation

The DELTA SUITE enables a situation to be presented on a map, in real time, to each member of a network defined for an operation, using PCs, tablets or smartphones to share elements of interest. It shortens decision-making loops.

**DELTA SUITE CIV-CORE** brings together the basic modules required **by users in the security forces (police, firemen, rescue, customs, private security, etc.)**. Its 'Windows' version is designed to equip operators working on this operating system, whether **on foot, in vehicles** or working from **a command center or crisis management center**.



The military version of DELTA SUITE has been used in operations by the French Special Operations Command since 2015. It promotes interoperability with third-party systems by complying with military and civilian standards and protocols

## Features of DELTA SUITE CIV-CORE for Windows

Based on a broad foundation of native functionalities (dashboard, search tools, measurement tools, etc.), several specific modules have been integrated to provide advanced capabilities.

### Cartography module

The integrated cartographic tools enable interaction with a wide range of geographic data formats (import of vector or raster files and connection to map servers) and spatial analyses (calculation of slope profiles, intervisibility calculations, danger zones (geofencing), etc.).

### Communications module

The DELTA SUITE CIV-CORE enables the automatic interconnection of members of the same communication network who may be located on a tactical bubble (GSM, satellite radios or other radio communication

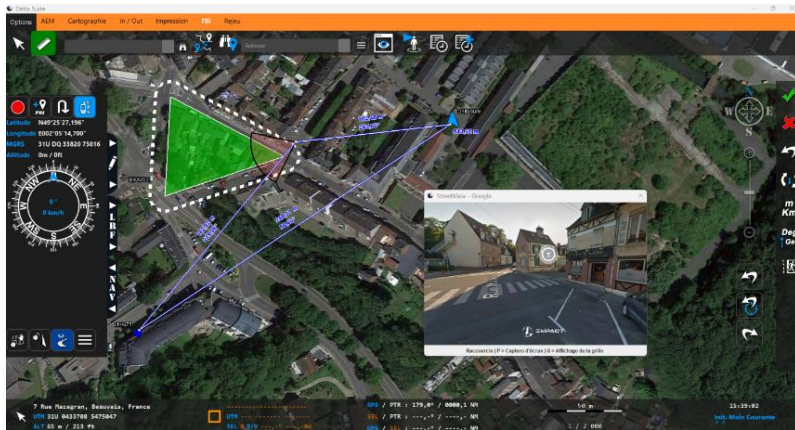
# PRODUCT DATA SHEET – DELTA SUITE CIV-CORE for Windows

systems<sup>1</sup> ). It can also be used as a gateway between different networks to transfer information from a local communications bubble to a remote command center.

## Location and navigation module

This module makes it possible to position oneself on the map using internal or external receivers, including inertial units<sup>1</sup> and provides access to basic or advanced navigation tools. In addition, provided it is connected

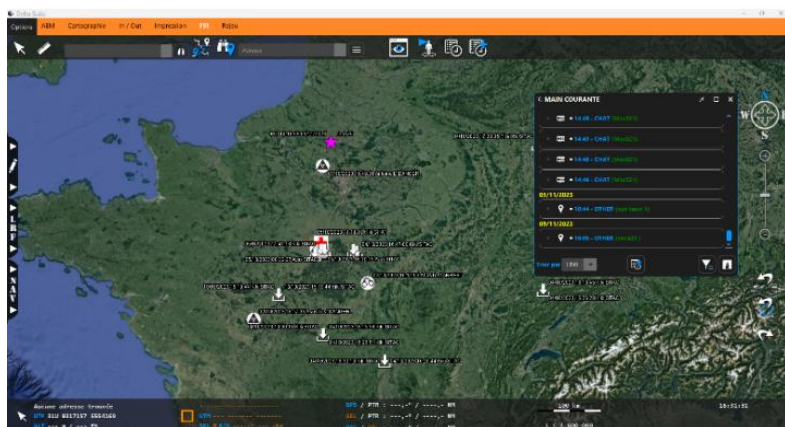
to a remote server, this module can be used to display or search for postal addresses, and has the ability to calculate routes based on the mode of transport, the type of route (recommended/shortest/fastest) and the areas to be avoided. Viewing images from Google Street View is also included, provided the area is covered and you have Internet access.



## TACTical SITUation module (TACSIT)

Provided it is connected via one of the many compatible communication media<sup>1</sup>, this module provides advanced tools for monitoring and exchanging the local tactical situation. It is based on the real-time fusion of feedback from friendly positions (Blue Force Tracking), vector information entered by operators and data received from sensors in the DELTA SUITE ecosystem. In particular, it is possible to exchange annotated or ground-trimmed photos (ground baptisms) or videos.

Connecting to the remote server mentioned above completes the tactical situation, with points of interest (institutions, shops, cultural venues, fire hydrants, etc.).



## Event tracking module

This module automatically records significant events<sup>2</sup> reported by the Delta Suites (Windows or Android) that make up the network. It requires connection to the server hosting the service.

## "CHAT" messaging module

This is an instant messaging tool that can operate either point-to-point (DELTA SUITE internal exchange protocols) or in client-server mode (Matrix protocol, TCHAP or XMPP compatible). This module enables

<sup>1</sup> Contact IMPACT for a full list of compatible equipment and systems.

<sup>2</sup> Contact IMPACT for a full list of events that can be displayed.



# PRODUCT DATA SHEET – DELTA SUITE CIV-CORE for Windows

messages and attachments to be exchanged within the DELTA SUITE community as well as with users of compatible systems.

## Full Motion Video (FMV) module

This module can simultaneously process several real-time or delayed video streams from a variety of sensors (UAVs, aircraft, etc.).

It can also be used to connect to a server for retrieving video streams from surveillance cameras, to create video displays and make them easier to use.





Processing of the video stream and associated metadata<sup>3</sup> enables information relating to the video to be displayed in the DELTA SUITE map background (target, sensor footprint, carrier position, line of sight, areas already observed, etc.).

It can also be used to display vector information directly in the video player in augmented video (baptism terrain or SITAC and the ability to draw points, lines or polygons in the video player).

## Optional modules

### DS IMINT

This business module, compatible with the Windows version only, is dedicated to the control of optronic systems on board aircraft and offers a set of advanced tools for optimising their operation:

-  Control and command of optronic systems;<sup>4</sup>
-  Encoder control ;
-  Extraction of the address of the target point and display in a title block ;
-  Moving map" tools.

### DS DRONES

This business module, which is compatible with Windows and Android versions, lets you interact with UAVs using the MAVLINK protocol. It is thus possible to transmit commands to the drones and monitor their parameters. Unlike **DS WAVEBIRD**, which is almost exclusively dedicated to remote piloting of UAVs, the DS DRONES module will enable complex payloads to be piloted, either alone or in conjunction with other modules.

## Contact

For further information, you can visit our website <https://sas-impact.fr/> or write to us at [contact@sas-impact.fr](mailto:contact@sas-impact.fr).

---

<sup>3</sup> Contact IMPACT for a list of supported formats.

<sup>4</sup> Contact Impact for a list of systems managed.