

DATASHEET – DELTA SUITE COMMAND & CONTROL (C2)

Overview

DELTA SUITE COMMAND & CONTROL (C2) runs on Windows and is the dedicated version to use within a command center. It is used in operation by the French Special Operations Command since 2015.

This version is composed of a set of basic functionalities and specific applications allowing managing cartography, monitoring common operational picture and exploiting real-time video streams.

In terms of communication, the exchange of data between different stations equipped with the DELTA SUITE is possible if they are connected through one of the many compatible communication means (LOS, BLOS, SATCOM, LTAC, MESH, MIMO).

DELTA SUITE allows increased interoperability with third-party systems, through compliance with military and civilian standards and protocols (VMF through IDM modems, CoT, FFI/MTF, MAVLINK, STANAG 4609, REST API, POP, SMTP and soon NMEA2000, STANAG 4586, STANAG 7023).



Basic functions

In order to allow a quick synthesis of the most important information, the user has a permanent access on the main display, and the hereafter functions and information:

- 🌐 Display of coordinates (MGRS, long/lat...);
- 🌐 Altitude and elevation (meter and feet);
- 🌐 Graphical scale (metric/imperial);
- 🌐 Local / Universal time;
- 🌐 Basic and advanced search tool;
- 🌐 Map interaction tools;
- 🌐 2D / 3D view toggle;
- 🌐 Azimuth and distance measurement tool;
- 🌐 Geofencing tool;
- 🌐 Monitoring tool.

Non contractual document

IMPACT : Société par Actions Simplifiée Unipersonnelle au capital de 15 000€

Inscrit au R.C.S. Orléans - N° SIRET : 752 383 075 00039 - TVA Intracom : FR 74752383075 – Code NAF 5829C

Siège social : 1 avenue du Champ de Mars, CS 30019, 45074 Orléans Cedex 2 contact@sas-impact.fr

DATASHEET – DELTA SUITE COMMAND & CONTROL (C2)

Mapping: data integration and terrain analysis

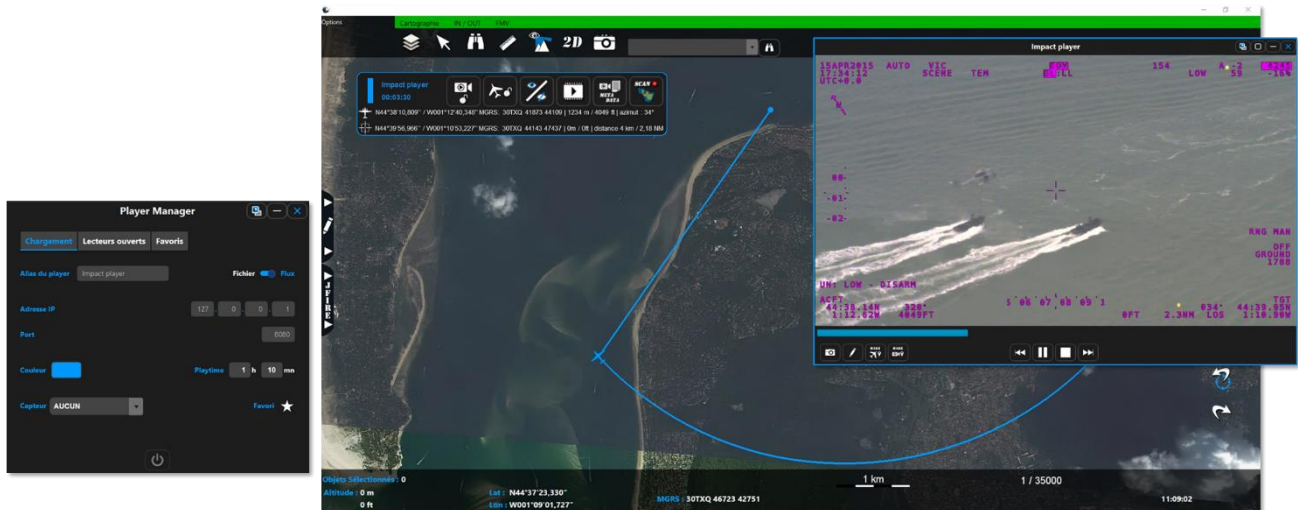
- 🌐 Drag and drop import capabilities of numerous geographic data formats (GeoTIFF, JPEG 2000, ECW, DTED/DMED, Shapefile, KML/KMZ, NITF, S57, USRP, ASRP, Mr Sid, AML, GeoPDF) and connection to web mapping services (WMTS, XYZ, TMS);
- 🌐 Drawing of vector objects;
- 🌐 Slope profiles calculation;
- 🌐 Line of sight calculations in 2D or 3D, linked to moving objects.

Monitoring of Common Operational Picture (COP)

This module provides advanced tools to monitor and exchange the Common Operational Picture (COP), based on the real-time fusion of data from Blue Force Tracking (BFT), vector data drew by operators and sensor data received from the DELTA SUITE NOMAD, ANDROID or AERO versions.

Full Motion Video (FMV) tool

Impact Player allows to operate simultaneously multiple real-time video stream from several different sensors (UAV, aircraft, etc.). Processing video stream and associated metadata (STANAG 4609) allows to display, in the DELTA SUITE C2, the target information, aircraft position, camera footprint and line of sight.



Additional tools allow to:

- 🌐 Display vector information in overlay directly in the Impact Player (augmented video function);
- 🌐 Report observations / draw directly in the Player;
- 🌐 Footprint and visualization of previously observed areas (scanning mode);
- 🌐 Record Video Stream;
- 🌐 Capture the video and annotate it in the DELTA SUITE's integrated drawing tool.

Options

Optional modules can be added to extend the functionalities offered by the DELTA SUITE.